

Innovation Centre
for Organic Farming

Optimizing the data foundation for calculating carbon footprint of organic productions

Julie Henriksen, Chief advisor

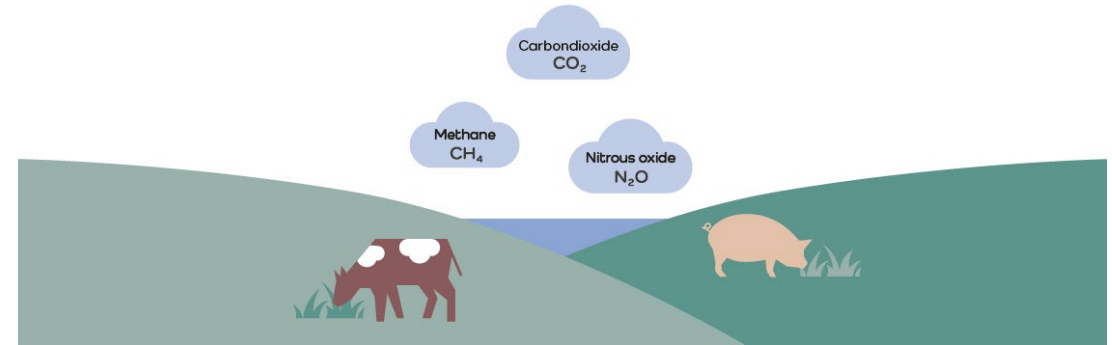
Marie Trydeman Knudsen, Senior researcher, Institut for Agroecology

Lisbeth Mogensen, Lektor, Institut for Agroecology



Funded by
the European Union
NextGenerationEU

Agenda



13:00 – 13:10: Welcome and short presentation of participants

13:10 – 13:30: Motivation and introduction to the workshop /Julie Henriksen, ICOEL

13:30 – 13:50: IFOAM's position on the PEF and the Directive on Green Claims

by Laura Sauques, Food Policy Assistant, IFOAM Organics Europe

13:50 – 14:45: Individual assignment and group discussion

What main factors describe the differences between organic and conventional productions?

Where do you see the main problems concerning knowledge gaps, relevant data and modelling?

Do you see some solutions?

14.45 – 15:00: What did we learn?

There is a need for... In relation to organic production

Conclusions from a Danish scientific synthesis

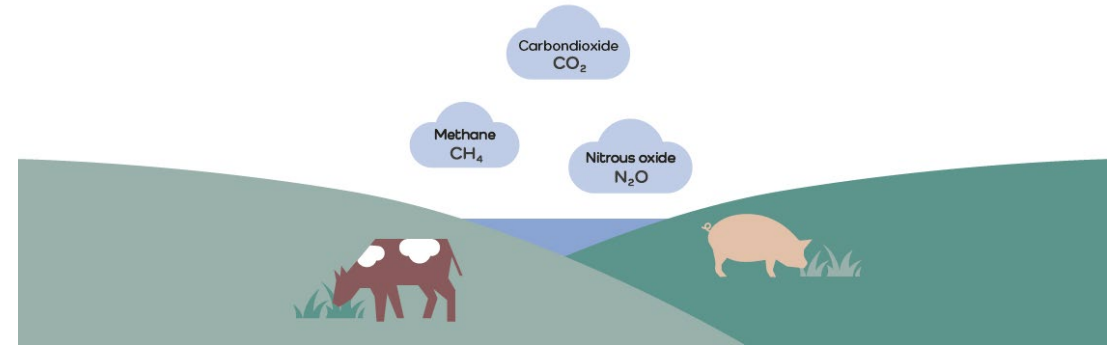
- Development of international recognized calculation methods
- Expansion of international databases
- Methods to handle complex, cirkular systems
- Improve modeling af climate impact at farm level
- Clear guidelines for LCA-calculations (eks. PEF)
- Research describing main variation between different production systems

Ref: VIDENSYNTESE OM LIVSCYKLUSVURDERINGER OG KLIMAEFFEKTIVITET I LANDBRUGSSEKTOREN

LISBETH MOGENSEN, MARIE TRYDEMAN KNUDSEN, FATEMEH HASHEMI, ANDREAS JENSEN OG TROELS KRISTENSEN DCA RAPPORT NR. 200 • FEBRUAR 2022 • RÅDGIVNING

The burning platform

Motivation and "state of the art"

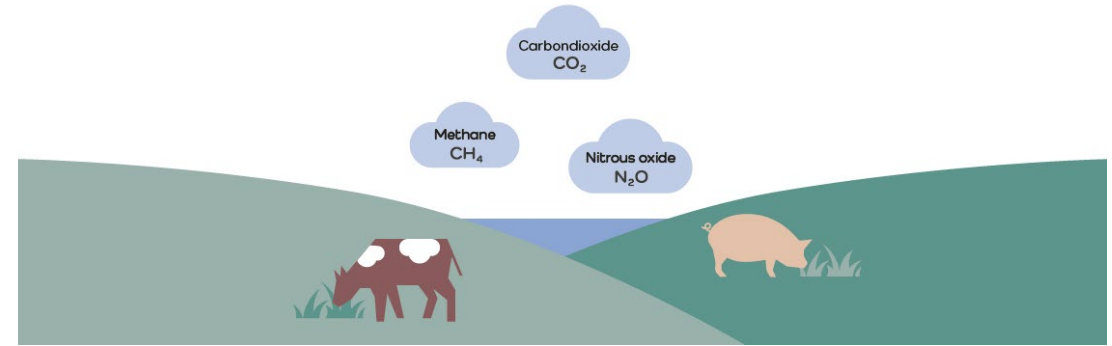


Challenges:

1. Knowledge and research methods assessing emissions from the agricultural sector often are based on the framework of conventional production systems
2. Emission factors, standard numbers and activity data often are based on the framework of conventional barn systems and intensive production
3. Concerning crop production, the impact of the inputs to the system often are calculated similar to conventional crop production

The burning platform

Motivation and "state of the art"



Where do you see the most problematic lack of data or research?

How do we manage to optimize this data and the modelling behind?

Building a roadmap

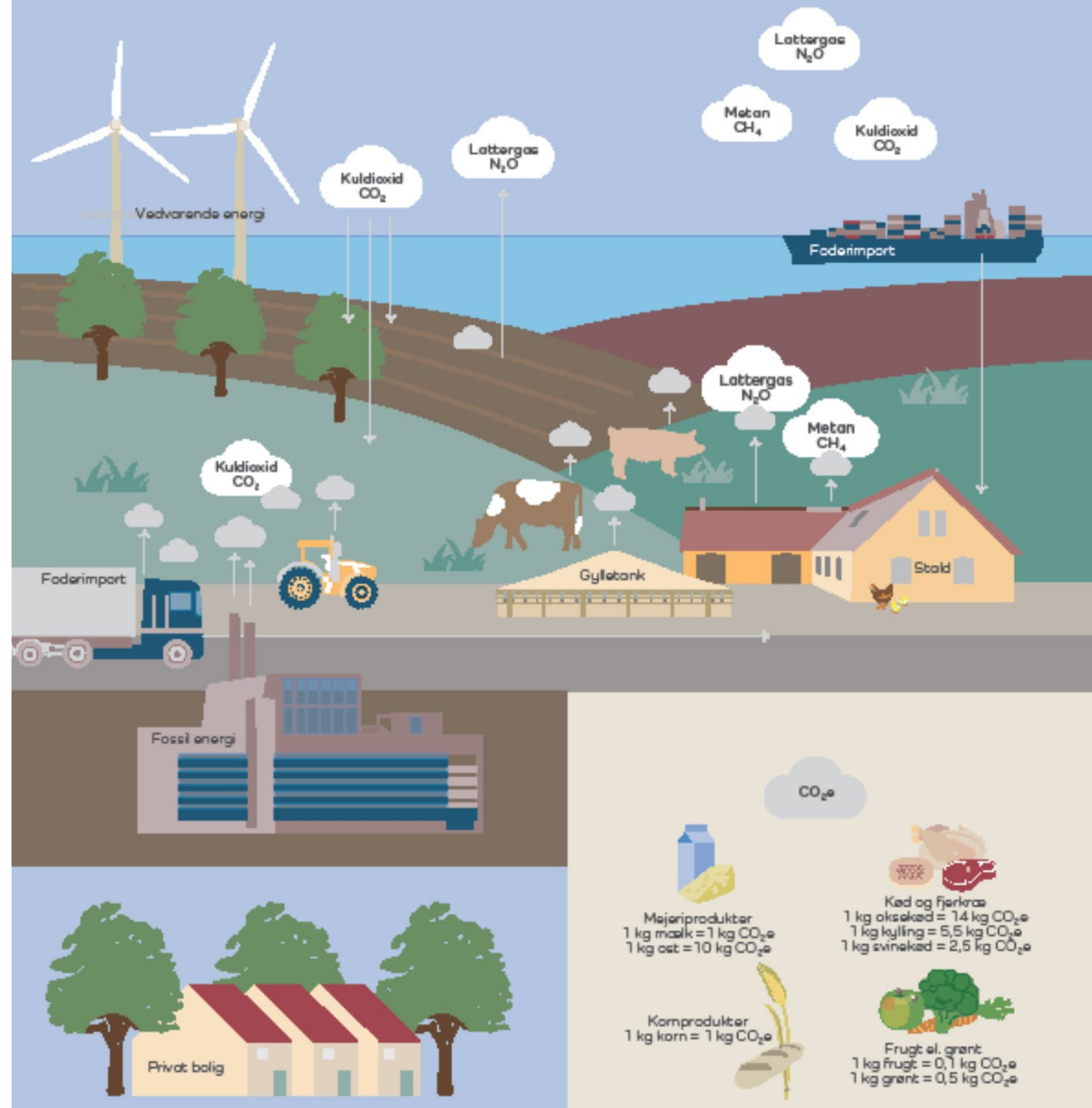
- 1) Point out the most important factors for calculation climate impact
- 2) Categorize the actions
- 3) Prioritize the actions

Emissions at farm level

Total emissions

Territorial emissions

Product level

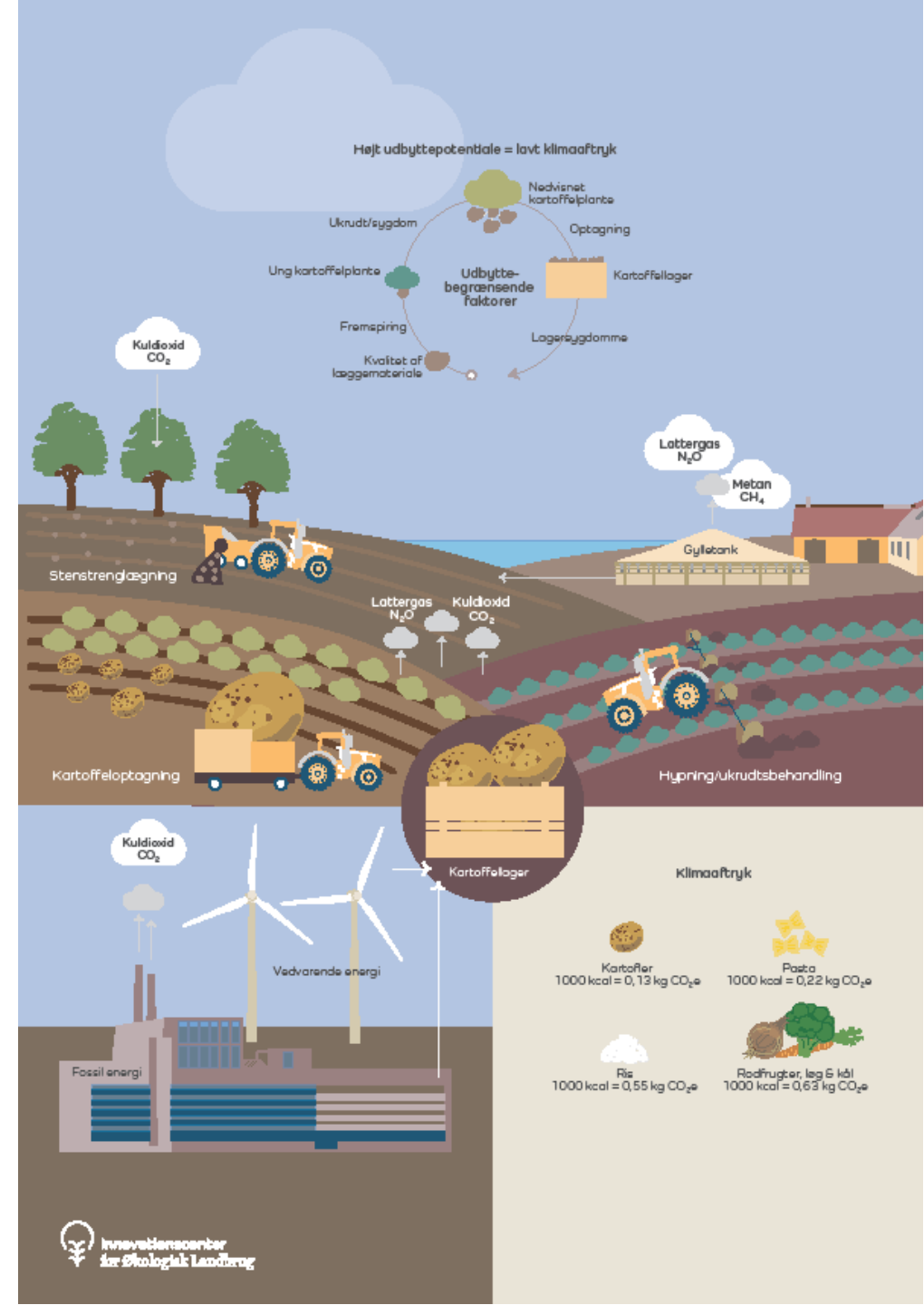


Emissions at farm level

Total emissions

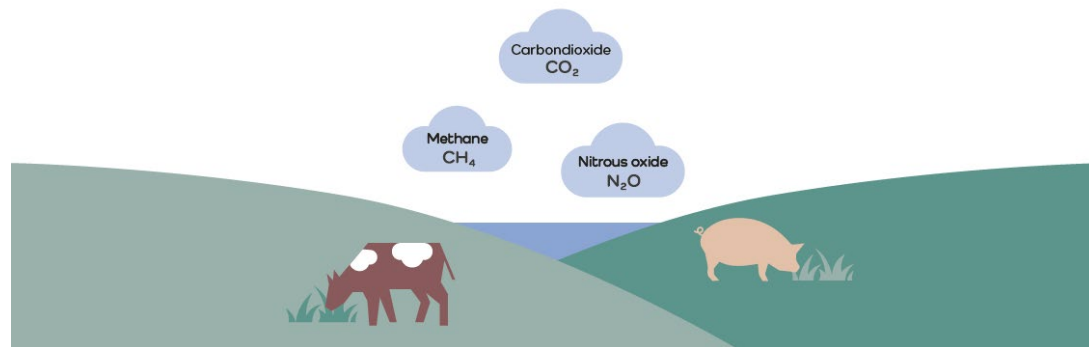
Territorial emissions

Product level



Aim of the workshop

To improve the knowledge and data foundation for calculating climate impact of organic productions



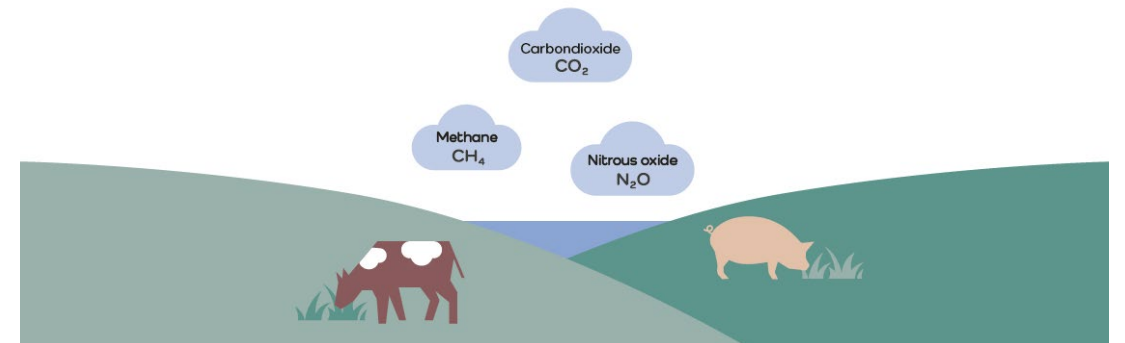
Aim of the workshop

What should we try to answer today?

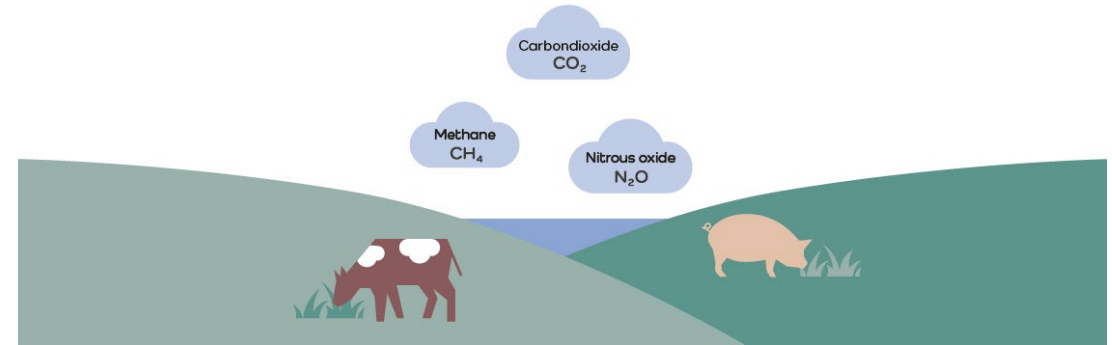
What actions should have the highest priority to improve calculation models?

In which areas do we need more research?

And who should we cooperate with to achieve improvement?



Agenda



13:00 – 13:10: Welcome and short presentation of participants

13:10 – 13:30: Motivation and introduction to the workshop /Julie Henriksen, ICOEL

13:30 – 13:50: IFOAM's position on the PEF and the Directive on Green Claims

by Laura Sauques, Food Policy Assistant, IFOAM Organics Europe

13:50 – 14:45: Individual assignment and group discussion

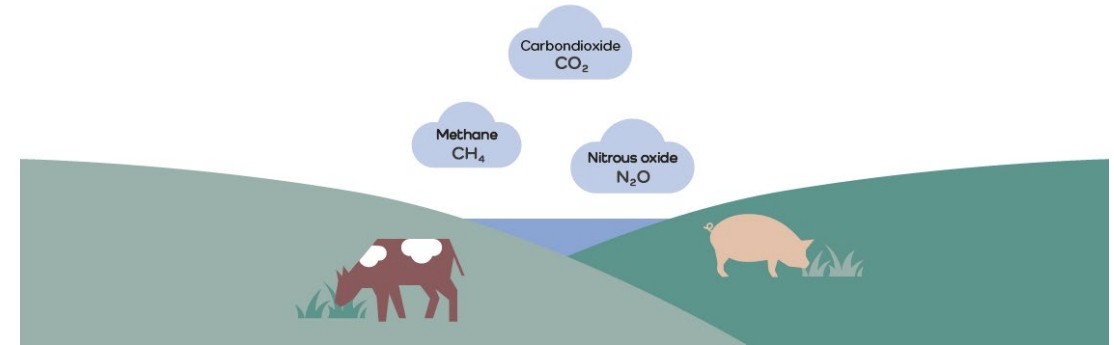
What main factors describe the differences between organic and conventional productions?

Where do you see the main problems concerning knowledge gaps, relevant data and modelling?

Do you see some solutions?

14.45 – 15:00: What did we learn?

Agenda



13:00 – 13:10: Welcome and short presentation of participants

13:10 – 13:30: Motivation and introduction to the workshop /Julie Henriksen, ICOEL

13:30 – 13:50: IFOAM's position on the PEF and the Directive on Green Claims

by Laura Sauques, Food Policy Assistant, IFOAM Organics Europe

13:50 – 14:45: Individual assignment and group discussion

What main factors describe the differences between organic and conventional productions?

Where do you see the main problems concerning knowledge gaps, relevant data and modelling?

Do you see some solutions?

14.45 – 15:00: What did we learn?

Group discussion

1) *Spend 10 minutes individually to list the main factors that differs between organic and conventional production*

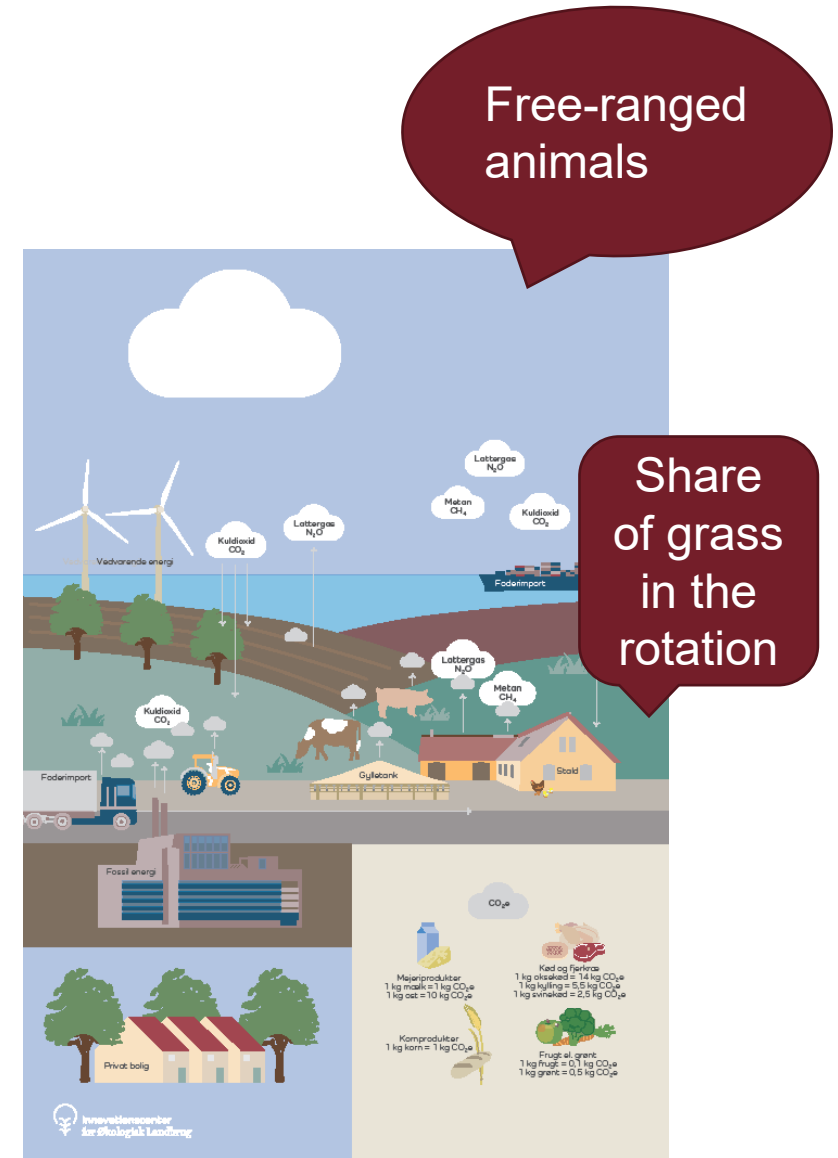
Where do you in your daily work see the biggest challenges?

2) *Group discussion where you share your list with the group*

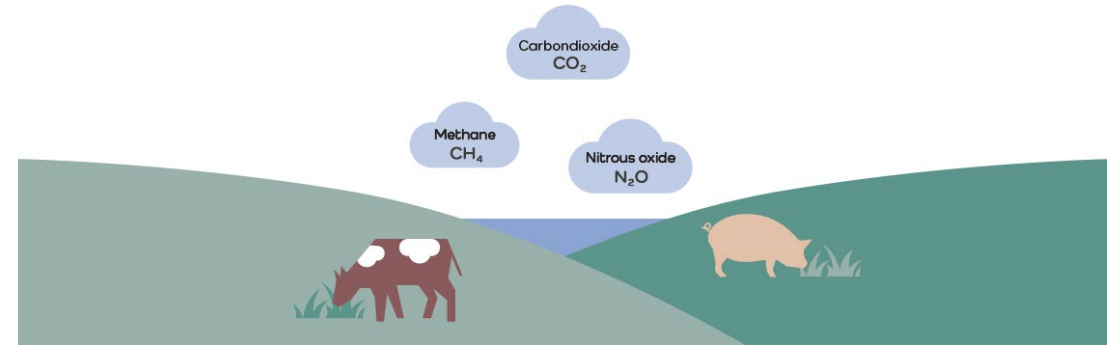
Which factors have you chosen?

What are the main issues in relation to calculating climate impact?

Do you see some solutions?



Categories of actions/solutions



1) Research:

- Scientific reviews
- New research projects

2) Development:

- Improved data collection
- Updating national/international databases
- Updating calculation models

3) Implementation:

- Network and dialogue with relevant stakeholders
- Political actions
- Cooperation with relevant companies
- Cooperation with international organisations

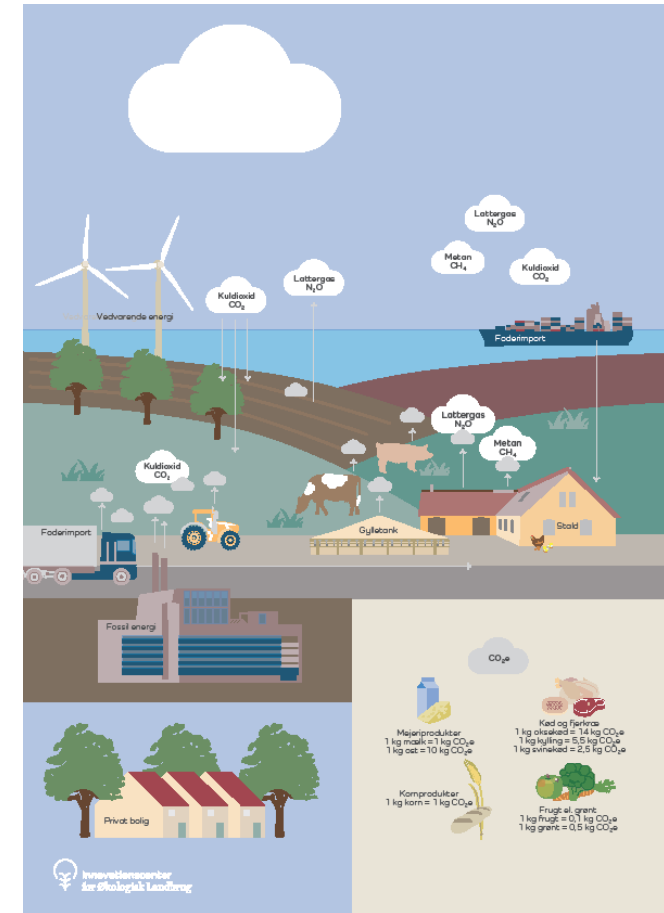
Group discussion

1) *Spend 10 minutes individually to list of the main factors that differs between organic and conventional production*

Where to you in your daily work see the biggest challenges?

Production system (dairy, pig, poultry, crops)

Farm level, product level, national level...



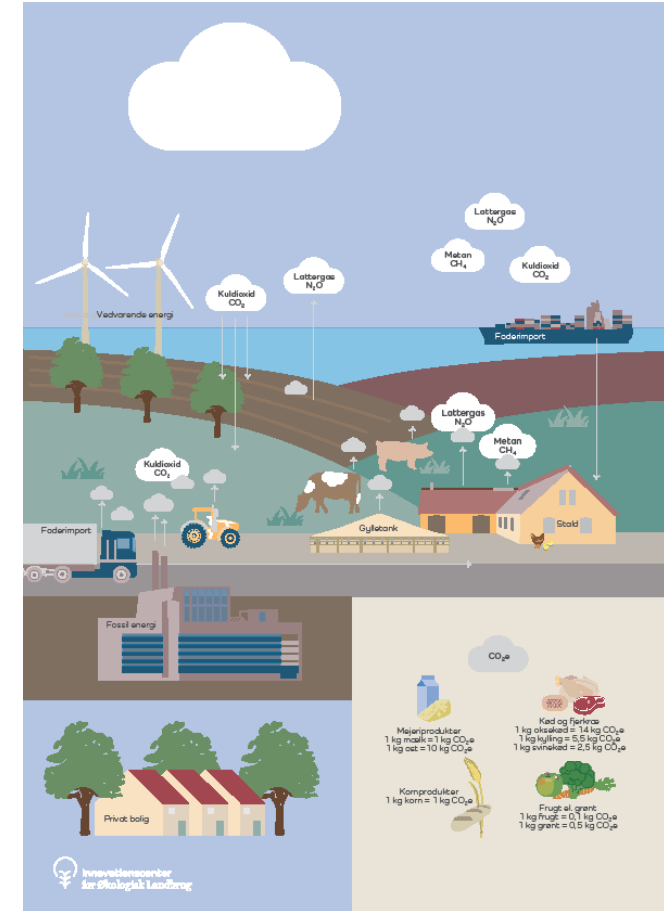
Group discussion

2) *Group discussion where you share your list with the group*

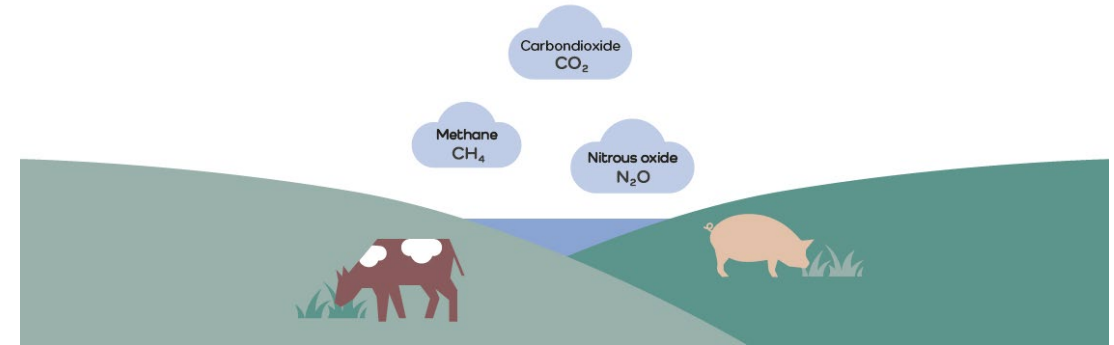
Which factors have you chosen?

What are the main issues in relation to calculating climate impact?

Do you see any solutions or relevant actions to improve this?



Agenda



13:00 – 13:10: Welcome and short presentation of participants

13:10 – 13:30: Motivation and introduction to the workshop /Julie Henriksen, ICOEL

13:30 – 13:50: IFOAM's position on the PEF and the Directive on Green Claims

by Laura Sauques, Food Policy Assistant, IFOAM Organics Europe

13:50 – 14:45: Individual assignment and group discussion

What main factors describe the differences between organic and conventional productions?

Where do you see the main problems concerning knowledge gaps, relevant data and modelling?

Do you see some solutions?

14.45 – 15:00: What did we learn?

What did we learn?

What should we try to answer today?

What actions should have the highest priority to improve calculation models?

In which areas do we need more research?

And who should we cooperate with to achieve improvement?

